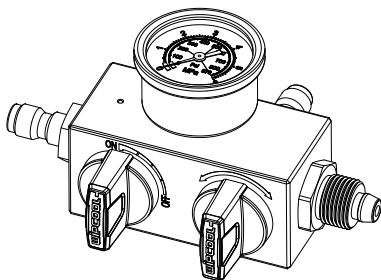


WIPCOOL[®]

IDEAL PRODUCTS FOR HVAC



TV-15

管路压力测试阀

Pressure Testing Valve

使用说明书

OPERATION MANUAL

1. Notice before usage/用前须知

Thank you for buying WIPCOOL Pressure Testing Valve, we are dedicated to providing you with high quality products.

Please check if your ordered product is in good shipment condition with the correct accessories, any damage during transportation, please contact us or the local distributors in time.

This manual gives instructions on the correct operation, it's important that you follow this instructions carefully.

If there is any change in the product (including the specification), we won't inform you any more.

■尊敬的用户，感谢您对本公司的信赖与支持，欢迎您使用维朋公司管路试压阀，我们将竭诚为您提供优质的产品。

■请您仔细检查收到的产品是否与订购产品一致，备附件、使用说明等是否齐全，运输过程中是否有损坏，如果发现上述情形请及时本公司或当地经销商联系。

■在使用本产品前，请您务必仔细阅读此说明书，按产品操作规程进行操作。

■产品（包括说明书）以后若有任何改动，请恕不另行通知。

2. Main uses/主要用途

The TV-15 Tube Pressure Testing Valve tests hydraulically for leaks in installations that are required to be leak proof and will test systems up to 15bar. Perfect for use in heating, compressed air, refrigeration systems, sprinkler systems and other small bore pipe installations.

Different from the traditional manual & electric pressure testing pumps, the TV-15 supplied the most economical solution. It can fit on WIPCOOL high pressure cleaning machines(C28T, 28B, C40T), but also fit all of high pressure cleaning machines on the market(1/4" fittings). So once you had a cleaning machine in hand, just buy a TV-15 for extending a new function.

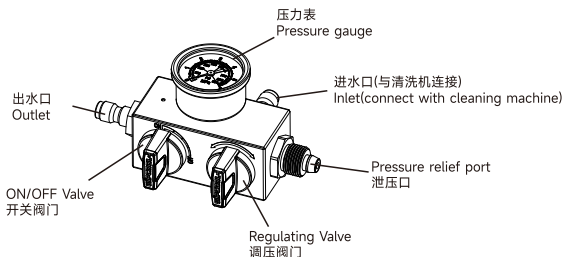
In additional, quick coupling system to disconnect the testing valve fast. This can be left on circuit being tested. Cleaning machine can be used to pressurize another circuit with second testing valve.

TV-15管路压力测试阀用于对要求防漏的管路是否存在泄漏进行加压测试，适用于测试压力在15bar以内的系统。非常适合用于地暖、自来水系统和其他小口径管道安装。

与传统的手动和电动压力测试泵不同，TV-15提供了最经济的压力测试解决方案。它可以安装在维朋高压清洗机（C28T、C40T）上，也可以安装在市面上其他的高压清洗机上（1/4英寸接头）。

另外，此装置采用快接结构，可以快速与清洗机断开并将此装置留在正在测试的管路上。清洗机可通过第二个测试阀对另一个管路进行加压测试。

3. Product Structure/产品结构



4. Notice before use/用前须知

⚠ Warning/警告

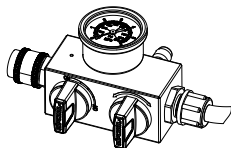
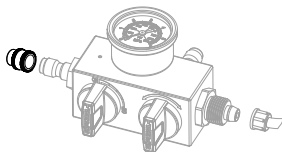
Make sure to adjust cleaning machine's working pressure be 15bar before usage as TV-15's max testing pressure is up to 15bar. Otherwise it will damage the TV-15.

使用前确保将清洗机的工作压力调整为15bar，否则会因压力过高而损坏试压阀TV-15。(试压阀的最大测试压力为15bar)

5. Operation and Usage/操作说明

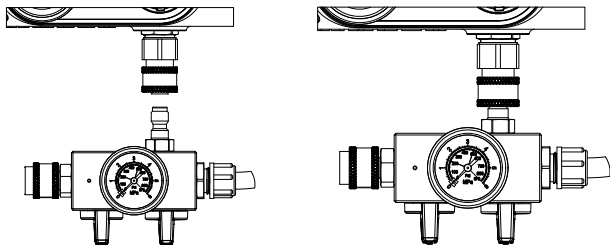
5.1 将快速堵头与泄压水管连上

Install the Fast-connection Plug & Pressure relief pipe



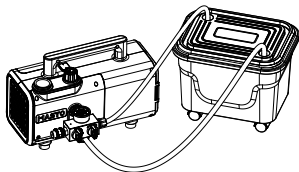
5.2 将管路试压阀连于清洗机

Connect the pressure testing valve with cleaning machine



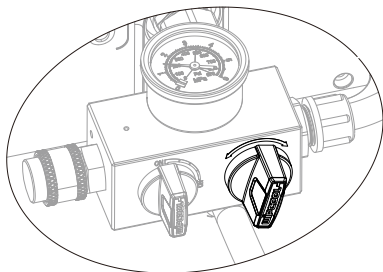
5.3 将水箱注满水并将泄压水管以及进水管放入水箱

Fill the tank with water and place the pressure relief pipe and inlet pipe into the water tank



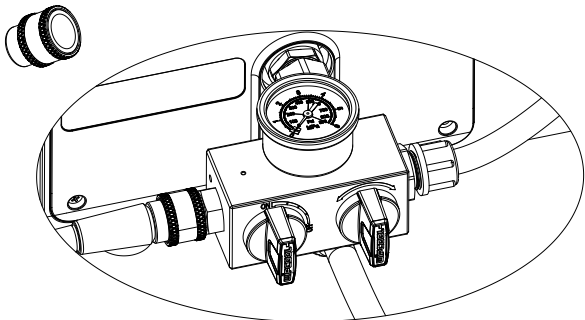
5.4 开启清洗机，转动调压阀门至需要测试的压力值，此时要保持开关阀门打开状态（ON）

Start the cleaning machine, rotate the Regulating pressure switch to the tested pressure. Do not attempt to start the machine with the ON/OFF valve with closed.

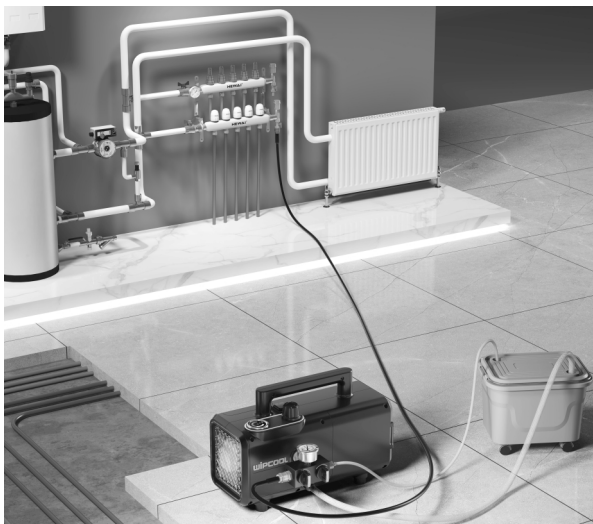


5.5 卸下快速堵头，连上出水管

Remove the fast-connect plug, connect with outlet hose



5.6 管路系统示意图



5.7 连接所需测试的管路系统，开启清洗机并观察压力表。

当压力表指针达到设定压力值时(表示整个管道系统处于设定的检测压力下)，关闭开关阀门(将旋钮转到OFF位置)。同时,关闭清洗机并开始管路泄漏测试, (TV-15可与清洗机断开连接) 此时可将试压阀从清洗机上卸下。

Connect with the tested pipe system, turn on the cleaning machine, then observe the pressure gauge.

Close the ON/OFF valve (switch to OFF position) when the pressure gauge pointer reaches the set pressure value(it indicates that the entire pipeline system is under the set detection pressure). At this time, switch off the cleaning machine and start leakage test(The TV-15 can be disconnected from the cleaning machine.)

