

Product Catalogue

Actuators and Flow Control Butterfly Valves



Sensors and Systems for Combustion Engineering

www.lamtec.de

Actuator 20 Nm, Type 662R2111.

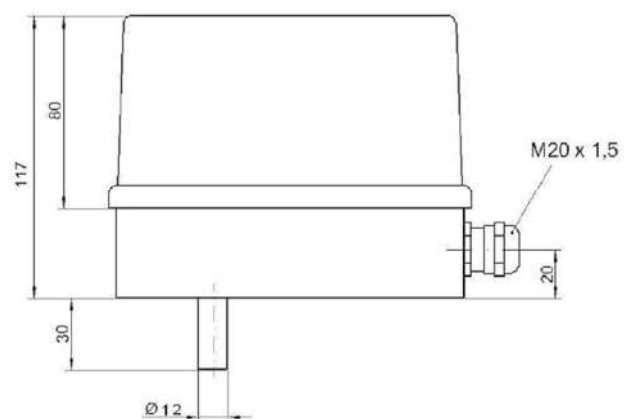
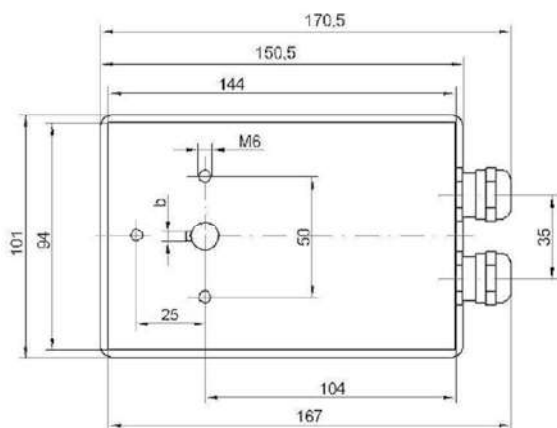
Technical Data



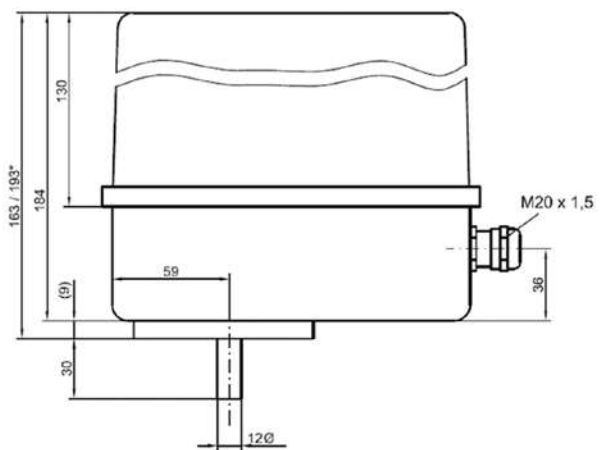
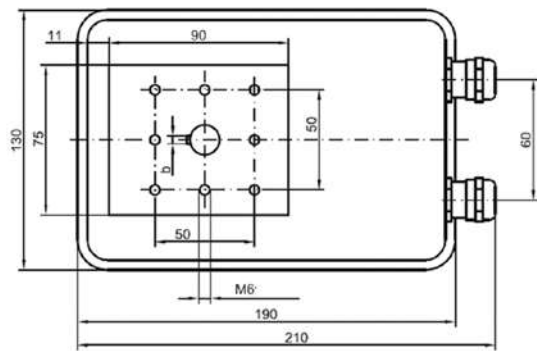
Actuator 20 Nm

Usage	for driving dampers and valves on combustion equipment	Dimensions [mm]	see dimension drawing
Power supply voltage	230 VAC/50 Hz	Screwed cable glands	2x M20x1,5, cabel Ø min. 8,0 mm, max. 13,0 mm
Form of shaft	Ø12 x 30, Form C02	Weigth [kg]	1,7
Running time [90°]	60 sec.	Protection class	IP54 with plastic cover
Controlling	DPS	Adaption	3x M6, screw-hole circle Ø 50 mm
End switches	2	Ambient temperature	-10...+ 60 °C
Additional switches	1	TÜV approval	when used with VMS/FMS/ETAMATIC

Illustrations and technical data refer to the standard version



Dimension drawing Actuator 20 Nm Type 662R2111 IP54 with plastic cover (with metal cover H=84 mm)



Dimension drawing Actuator with electronic control

Ordering Information

Description / Type (standard variant)	Order no.
Actuator 20 Nm, 230 VAC, running time 60 sec. to 90°, TPS, position feedback POTENTIOMETER 5 kOHM, conductive plastic, TÜV approved, 2 end switches, 1 additional switch, without electr. override, IP54 ¹⁾	662 R 2111 - ...
1) Coupling or lever must be ordered separately	
A 03 – TORQUET	Selection
20 Nm	020
A 05 – FORM OF SHAFT	Selection
ROUND SHAFT 12x30 mm WITH FEATHER KEY 4 x 4 x 14 mm	C02*
A 10 – POWER SUPPLY VOLTAGE	Selection
POWER SUPPLY VOLTAGE 115 VAC/50 Hz	1155
POWER SUPPLY VOLTAGE 115 VAC/60 Hz	1156
POWER SUPPLY VOLTAGE 230 VAC/50 Hz	2305*
POWER SUPPLY VOLTAGE 230 VAC/60 Hz	2306
A 15 – RUNNING TIME TO 90°	Selection
60 SECONDS	60*
RUNNING TIME SPECIFICATION BY CUSTOMER	—
A 20 – ANGULAR DISPLACEMENT	Selection
DISPLACEMENT 90°	090*
DISPLACEMENT 120°	120
DISPLACEMENT 135°	135
DISPLACEMENT 180°	180
DISPLACEMENT 270°	270
A 25 – CONTROLLING	Selection
THREE-POINT-STEP POSITION FEEDBACK „POTENTIOMETER USE“	DPS*
ELECTRONIC CONTROLLING 4...20 mA (only possible with CLASS OF PROTECTION IP65) POSITION FEEDBACK „4...20 mA“, additional position feedback “POTENTIOMETER 5 kOHM (COND. PLASTIC), TÜV approved”	REG

*Default settings

Ordering Information

A 30 – POSITION FEEDBACK	Selection
POTENTIOMETER 100 OHM (WIRE-WOUND) only possible with THREE-POINT-STEP-CONTROLLING	100R
POTENTIOMETER 1 KOHM (WIRE-WOUND) only possible with THREE-POINT-STEP-CONTROLLING	1K
POTENTIOMETER 200 OHM (WIRE-WOUND) only possible with THREE-POINT-STEP-CONTROLLING	200R
POTENTIOMETER 5 KOHM (CONDUCTIVE PLASTIC), TÜV approved, POSITIVE, FREE OF BACKLASH, only possible with THREE-POINT-STEP-CONTROLLING	5K*
4...20 mA Standard at ELECTRONIC CONTROLLING 4...20 mA Caution: position feedback at ETAMATIC/FMS/VMS not failsafe, use additional position feedback “POTENTIOMETER 5 KOHM (COND. PLASTIC), TÜV approved” !	REG
A 35 – ADDITIONAL POSITION FEEDBACK	Selection
WITHOUT ADDITIONAL POSITION FEEDBACK	0*
POTENTIOMETER 100 OHM (WIRE-WOUND)	100R
POTENTIOMETER 1 KOHM (WIRE-WOUND)	1K
POTENTIOMETER 200 OHM (WIRE-WOUND)	200R
POTENTIOMETER 5 KOHM (CONDUCTIVE PLASTIC), TÜV approved Mandatory for failsafe position feedback indication when using electronic control such as FMS/VMS/ETAMATIC	5K
A 40 – ELECTRICAL OVERRIDE selection not possible, delivery only with ELECTRICAL OVERRIDE	
A 45 – IP PROTECTION CLASS	Selection
IP54 WITH PLASTIC COVER	54*
IP54 WITH METAL COVER	54M
IP65 WITH METAL COVER	65
A 50 – END SWITCHES	Selection
2 END SWITCHES	ES2*
2 END SWITCHES GASTIGHT	ESG
A 55 – ADDITIONAL SWITCHES	Selection
WITHOUT ADDITIONAL SWITCHES	ZS0
1 ADDITIONAL SWITCH	ZS1*
2 ADDITIONAL SWITCHES	ZS2
3 ADDITIONAL SWITCHES	ZS3
4 ADDITIONAL SWITCHES	ZS4
1 ADDITIONAL SWITCH GASTIGHT	ZG1
2 ADDITIONAL SWITCHES GASTIGHT	ZG2
3 ADDITIONAL SWITCHES GASTIGHT	ZG3
4 ADDITIONAL SWITCHES GASTIGHT	ZG4

*Default settings

Ordering Information

A 60 – DIRECTION OF ROTATION* (view to the shaft feather key on 12.00 o'clock)	Selection
DIRECTION OF ROTATION TO THE RIGHT (12.00 o'clock to 3.00 o'clock , clockwise')	1R*
DIRECTION OF ROTATION TO THE LEFT (12.00 o'clock to 9.00 o'clock , anti-clockwise')	2L
A 65 – GEAR	Selection
STANDARD	S*
GEAR FOR INCREASED TEMPERATURE 80 °C (only possible with IP65 PROTECTION CLASS)	W
A 70 – ADAPTION	Selection
3x M6, HOLE CIRCLE Ø 50 mm	S*
BY TYPE	T / U / W
BY DRAWING	ZG
A 75 –COLOUR	Selection
COVER BLUE	1B*
COVER BLACK	2S
A 80 –CABLE GLANDS	Selection
2x M20	1S*
CABLE GLANDS SPECIFICATION BY CUSTOMER	2K
A 85 –SPECIAL CONFIGURATION	Selection
WITHOUT SPECIAL CONFIGURATION	S00*
HOUSING HEATING 230 VAC/15 W, incl. THERMOSTAT, down to -30 °C (only possible with CLASS OF PROTECTION IP65)	S02

*Default settings